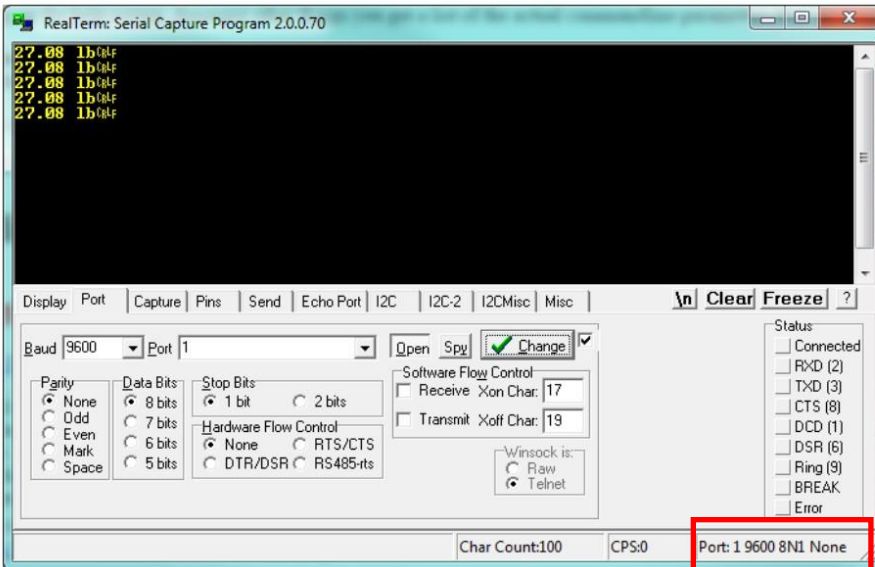


## USB/RS-232 Test Using Terminal

You can also test the scale communication using a Serial Terminal. To do this, first you will need to download a suitable terminal (if you don't have one). We recommend RealTerm (<https://www.i2cchip.com/realterm/>). Download **Realterm\_3.0.1.44\_setup.exe**.

Direct Link to File: [https://www.i2cchip.com/realterm/Realterm\\_3.0.1.44\\_setup.exe](https://www.i2cchip.com/realterm/Realterm_3.0.1.44_setup.exe)

In RealTerm (or your favorite terminal), setup the connection using the COM port of your Serial Communication. The Port number must match the number you found on the Device Manager screen.



Set the Baud to “9600”.

Set the Port number to the COM number you see in the “Device Manager”.

Set the Parity to “None”.

Set Data Bits to “8 bits”.

Set the Stop bit to “1 bit”.

Set the Hardware Flow Control to “None”.

Press the CHANGE button.

Make sure the Status bar under the “Status” group window shows “Port: <COM> 9600 8N1 None”

Make sure the **Port** designation on the bottom right of the screen shows the correct connection parameters. Then press the PRINT button on the scale to start sending data on to the terminal.

Alternatively, you can also send “\*P” to the scale to retrieve weight. Use the **Send Tab** to do this: Press the **Send ASCII** button to send the command to the scale.

If everything works out as specified, the scale is working properly.

